



## ***Certificate of Analysis***

---

<b>Catalog Number:</b>	1017
<b>Lot Number:</b>	141OC08
<b>Cell Count:</b>	5.6 x 10 <sup>6</sup>
<b>Viability:</b>	85%
<b>CD3 positive:</b>	95.0%
<b>CD19 positive:</b>	0.1%
<b>CD11c positive:</b>	6.0%
<b>CD14 positive:</b>	0.8%

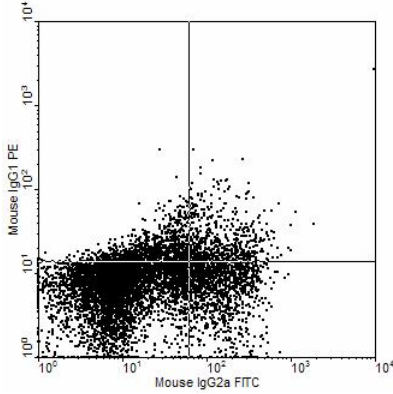
### **Donor Information**

<b><i>DonorId</i></b>	41
<b><i>ABOType</i></b>	O+
<b><i>Age/Race/Gender</i></b>	37yo Black Male

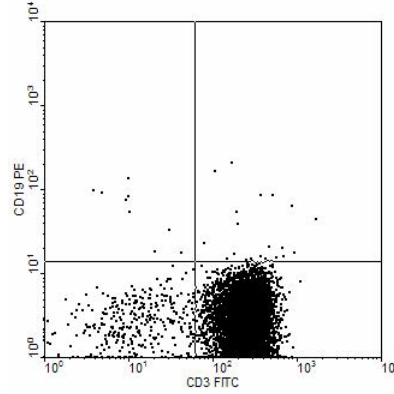
### ***Notes***

Donors are tested for the blood borne pathogens HIV-1 and 2, Hepatitis B, Hepatitis C and HTLV-1, and are negative. Cells should still be handled as if potentially infectious following biosafety level 2 procedures.

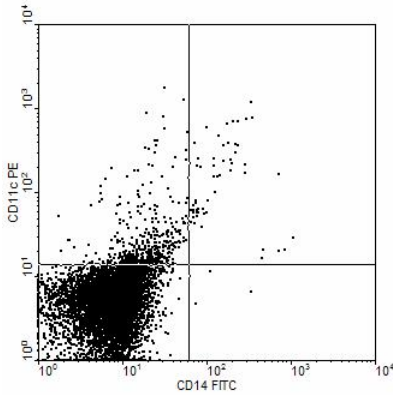
**FOR RESEARCH USE ONLY. NOT FOR DIAGNOSTIC OR THERAPEUTIC USE**



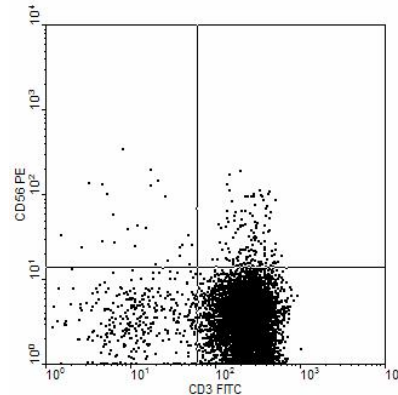
Mouse IgG2a FITC(Log) vs  
Mouse IgG1 PE(Log)  
Quadrant x,y: 460,296  
Quad %Gated  
1 UL 10.87  
2 UR 7.89  
3 LL 64.99  
4 LR 16.24



CD3 FITC(Log) vs CD19 PE(Log)  
Quadrant x,y: 460,296  
Quad %Gated  
1 UL 0.13  
2 UR 0.30  
3 LL 4.54  
4 LR 95.04



CD14 FITC(Log) vs CD11c PE(Log)  
Quadrant x,y: 460,296  
Quad %Gated  
1 UL 6.02  
2 UR 0.83  
3 LL 93.09  
4 LR 0.06



CD3 FITC(Log) vs CD56 PE(Log)  
Quadrant x,y: 460,296  
Quad %Gated  
1 UL 0.36  
2 UR 1.90  
3 LL 4.59  
4 LR 93.15