



Certificate of Analysis

Catalog Number:	1001
Lot Number:	152DE08
Cell Count:	6×10^7
Viability:	92%
CD3 positive:	56.0%
CD19 positive:	11.6%
CD11c positive:	5.6%
CD14 positive:	2.2%

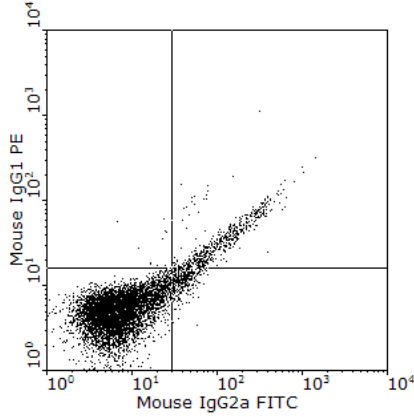
Donor Information

<i>DonorId</i>	40
<i>ABOType</i>	B+
<i>Age/Race/Gender</i>	38yo Black Male

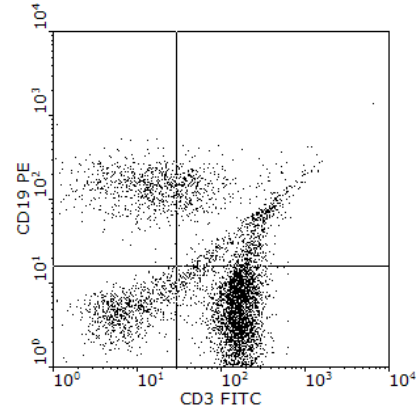
Notes

Donors are tested for the blood borne pathogens HIV-1 and 2, Hepatitis B, Hepatitis C and HTLV-1, and are negative. Cells should still be handled as if potentially infectious following biosafety level 2 procedures.

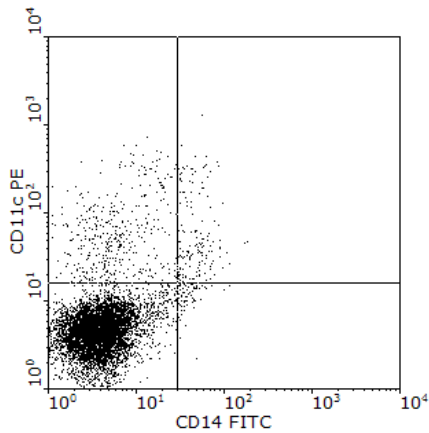
FOR RESEARCH USE ONLY. NOT FOR DIAGNOSTIC OR THERAPEUTIC USE



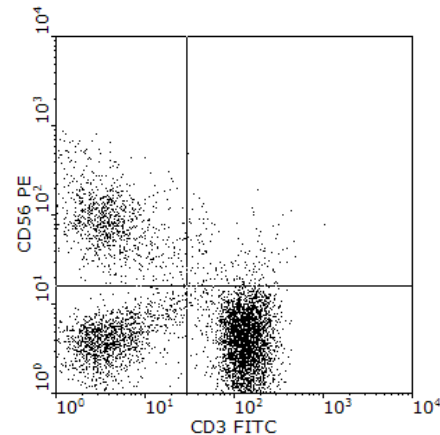
Mouse IgG2a FITC(Log) vs
Mouse IgG1 PE(Log)
Quadrant x,y: 376,308
Quad %Gated
1 UL 0.17
2 UR 8.25
3 LL 86.45
4 LR 5.13



CD3 FITC(Log) vs CD19 PE(Log)
Quadrant x,y: 376,308
Quad %Gated
1 UL 11.60
2 UR 18.40
3 LL 13.89
4 LR 56.10



CD14 FITC(Log) vs CD11c PE(Log)
Quadrant x,y: 376,308
Quad %Gated
1 UL 5.58
2 UR 2.23
3 LL 91.24
4 LR 0.95



CD3 FITC(Log) vs CD56 PE(Log)
Quadrant x,y: 376,308
Quad %Gated
1 UL 16.07
2 UR 3.04
3 LL 22.74
4 LR 58.16