



**CD56+ cells—negatively selected**  
**Catalog #1024**  
**Lot #182JN09**

## ***Certificate of Analysis***

<b>Catalog Number:</b>	1024
<b>Lot Number:</b>	182JN09
<b>Cell Count:</b>	5.3 x 10 <sup>6</sup>
<b>Viability:</b>	97%
<b>CD3 positive:</b>	5.8%
<b>CD19 positive:</b>	0.2%
<b>CD56 positive</b>	80.1%
<b>CD11c positive:</b>	60.9%
<b>CD14 positive:</b>	1.6%

### **Donor Information**

<b><i>DonorId</i></b>	41
<b><i>ABOType</i></b>	O positive
<b><i>Age/Race/Gender</i></b>	37yo Black Male

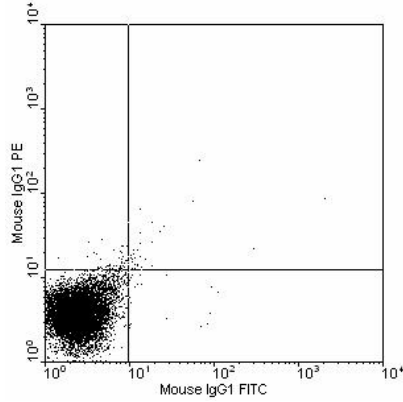
### ***Notes***

Donors are tested for the blood borne pathogens HIV-1 and 2, Hepatitis B, Hepatitis C and HTLV-1, and are negative. Cells should still be handled as if potentially infectious following biosafety level 2 procedures.

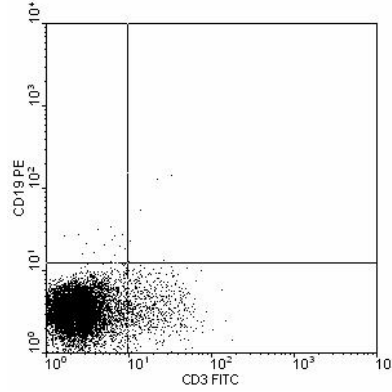
**FOR RESEARCH USE ONLY. NOT FOR DIAGNOSTIC OR THERAPEUTIC USE**



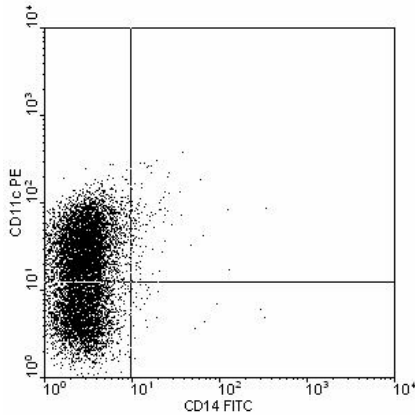
**CD56+ cells—negatively selected**  
**Catalog #1024**  
**Lot #182JN09**



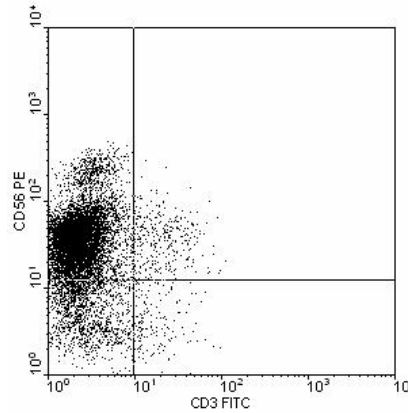
Mouse IgG1 FITC(Log) vs  
 Mouse IgG1 PE(Log)  
 Quadrant x,y: 252,280  
 Quad %Gated  
 1 UL 0.59  
 2 UR 0.38  
 3 LL 98.81  
 4 LR 0.23



CD3 FITC(Log) vs CD19 PE(Log)  
 Quadrant x,y: 252,280  
 Quad %Gated  
 1 UL 0.18  
 2 UR 0.07  
 3 LL 93.90  
 4 LR 5.85



CD14 FITC(Log) vs CD11c PE(Log)  
 Quadrant x,y: 252,280  
 Quad %Gated  
 1 UL 59.53  
 2 UR 1.35  
 3 LL 38.79  
 4 LR 0.32



CD3 FITC(Log) vs CD56 PE(Log)  
 Quadrant x,y: 252,280  
 Quad %Gated  
 1 UL 80.10  
 2 UR 3.39  
 3 LL 14.79  
 4 LR 1.72