

PO Box 2308  
Redmond, WA 98073  
Phone: 866-513-1894  
Fax: 440-508-2919  
info@astartebio.com

### **Certificate of Analysis**

**Catalog Number:** 1019  
**Description:** CD14+ Depleted PBMC  
**Lot Number:** 117AP08  
**Cell Count:**  $7.5 \times 10^6$   
**Viability:** 95.0%

#### **Donor Information**

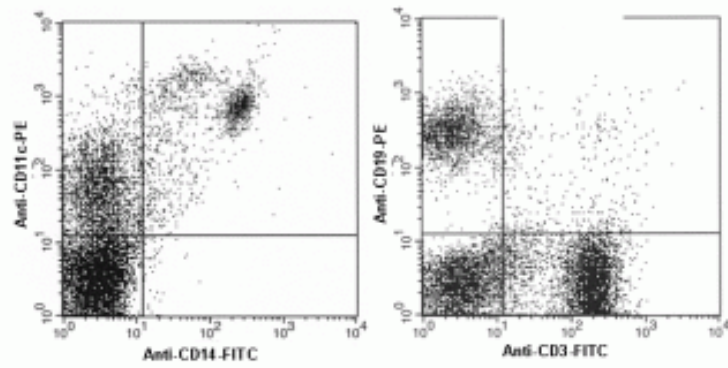
**DonorId** 34  
**ABOType** A Pos  
**Age/Race/Gender** 56 yo Black Male

#### **Notes**

**Donors are tested for the blood borne pathogens HIV-1 and 2, Hepatitis B, Hepatitis C and HTLV-1, and are negative. Cells should still be handled as if potentially infectious following biosafety level 2 procedures.**

**FOR RESEARCH USE ONLY. NOT FOR DIAGNOSTIC OR THERAPEUTIC USE**

**PBMC—CD14 Depleted Selected Cells**



**Starting PBMC**

