



Certificate of Analysis

Catalog Number:	1017
Lot Number:	156DE08
Cell Count:	6×10^6
Viability:	80%
CD3 positive:	96.5%
CD19 positive:	0.3%
CD11c positive:	0.3%
CD14 positive:	0.3%

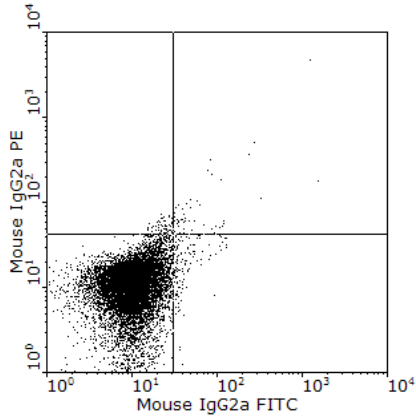
Donor Information

<i>DonorId</i>	59
<i>ABOType</i>	O Positive
<i>Age/Race/Gender</i>	32yo Black Male

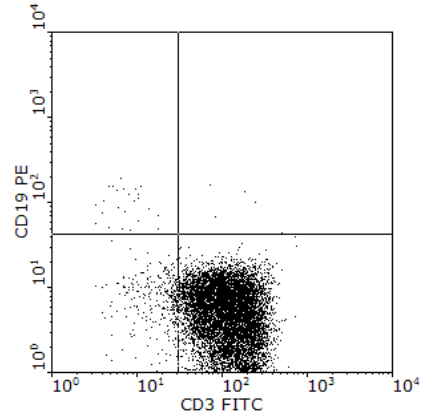
Notes

Donors are tested for the blood borne pathogens HIV-1 and 2, Hepatitis B, Hepatitis C and HTLV-1, and are negative. Cells should still be handled as if potentially infectious following biosafety level 2 procedures.

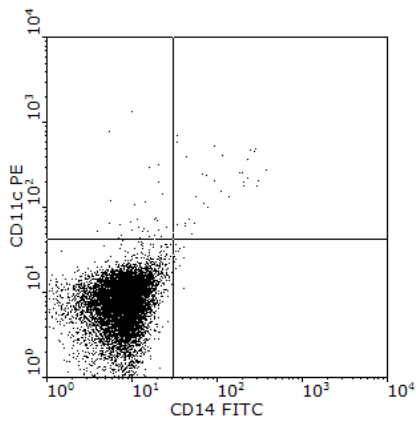
FOR RESEARCH USE ONLY. NOT FOR DIAGNOSTIC OR THERAPEUTIC USE



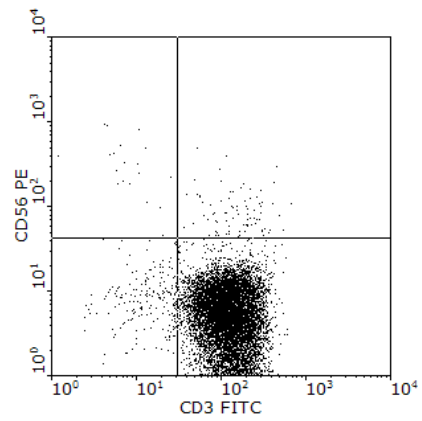
Mouse IgG2a FITC(Log) vs Mouse IgG2a PE(Log)
Quadrant x,y: 380,416
Quad %Gated
1 UL 0.69
2 UR 0.57
3 LL 97.27
4 LR 1.48



CD3 FITC(Log) vs CD19 PE(Log)
Quadrant x,y: 380,416
Quad %Gated
1 UL 0.26
2 UR 0.05
3 LL 3.14
4 LR 96.55



CD14 FITC(Log) vs CD11c PE(Log)
Quadrant x,y: 380,416
Quad %Gated
1 UL 0.32
2 UR 0.33
3 LL 99.22
4 LR 0.13



CD3 FITC(Log) vs CD56 PE(Log)
Quadrant x,y: 380,416
Quad %Gated
1 UL 0.20
2 UR 0.88
3 LL 2.10
4 LR 96.82