

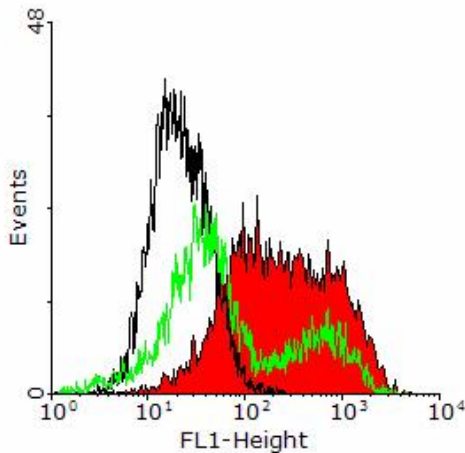
## ***Certificate of Analysis***

**Catalog Number:** 1062  
**Lot Number:** 246SE09  
**Cell Count:**  $7.2 \times 10^6$   
**Viability:** 98%

### **Flow Cytometric Analysis**

**CD11c:** 95.8%  
**CD86:** 26.9%

### **Functional Analysis**



Dendritic cells were thawed and placed into culture at  $2 \times 10^5$  per mL in medium containing recombinant murine GM-CSF. LPS was added to one of the two cultures at 1 ug/mL. 48 hours later the cells were collected and the expression of CD86 was analyzed by flow cytometry. The black histogram is staining with irrelevant antibody, the green histogram shows CD86 expression by DC in the absence of LPS and the red histogram is the CD86 staining of LPS activated DC.

### ***Notes:***

Derived from Male Balb/c mice

**FOR RESEARCH USE ONLY. NOT FOR DIAGNOSTIC OR THERAPEUTIC USE**